



May River

TOTAL SQ. FT. 3,368

MAIN HOUSE:
HEATED SQ FT 2,785

2-CAR ATTACHED
GARAGE

CARRIAGE HOUSE:
HEATED SQ FT 583

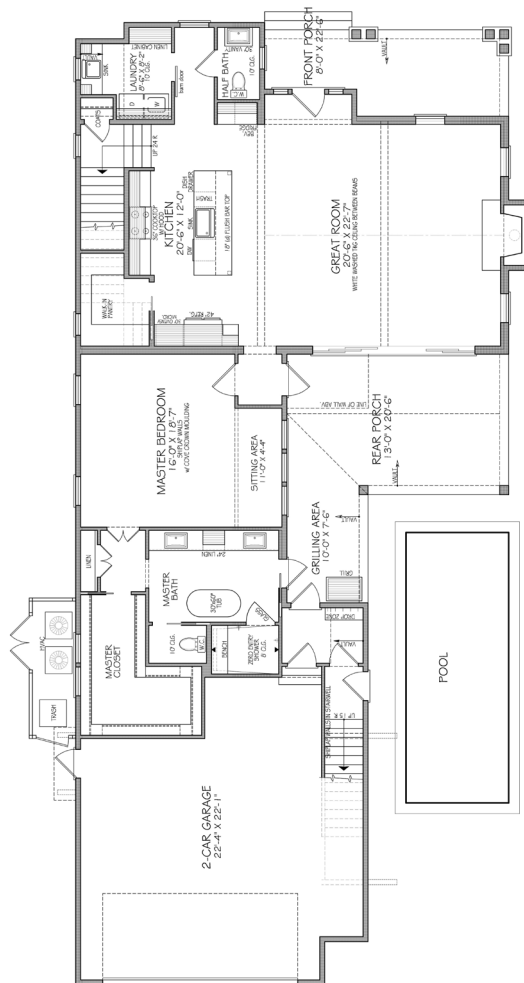
4 BED/ 4.5 BATH
INCLUDING
CARRIAGE HOUSE



OFFERED BY:
Keith Beatty
Drew Pittman

ELENA WRIGHT
Broker / REALTOR®, RCC COMMUNITY SPECIALIST
910.509.7650 | AirlieNC.com | aws@IntracoastalRealty.com
Sales Office: 6800 Wrightsville Avenue, Wilmington, NC 28403

FIRST FLOOR: 1,779 SQ. FT.



SECOND FLOOR: 1,006 SQ. FT.
CARRIAGE HOUSE: 583 SQ. FT.

